



Primary Tracker

Primary Assessment Tool



020 8290 7171



enquiries@bromcom.com

Bromcom 
No.1 Choice for Cloud MIS & Finance

Primary Assessment Tracker

Powerful tracking that's simple to setup



Bromcom's Primary Tracker is an assessment tool built with Primary Schools in mind. It is easy to setup, doing away with the complexities assessment tools often have and provides you with visual, user-friendly Marksheets for entering marks and a set of powerful yet simple tools to help you analyse your Primary Assessment data. It's always being updated too, to make it even more powerful and customisable.



Setup Wizard

Quick setup using a wizard-style approach to configure Assessment.



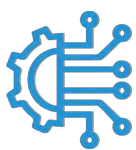
Powerful Marksheets

Marksheets are designed to save teacher time with several tools to help them quickly and easily complete their data entry.



Built-in Analysis

Quickly analyse your Primary Assessment data using analysis tools which have been created to help you identify gaps as quickly as possible.



Assessment data integrated with MIS data

Allows schools to record student Assessment directly within the MIS without the need for third-party solutions.

The Primary Tracker supports Summative Assessment, Formative Assessment, the Early Years Foundation Stage and Test Scores. The Primary Tracker Marksheets have been designed to be clear and uncluttered, giving teachers tools to reduce the time spent entering data, and giving them immediate feedback by using colour-coding to indicate the level each student is working at.

Built-in Analysis

See how groups of students are performing against their Age Related Expectations, across a range of subjects and Assessment points. Analyse student progress from one assessment point to another, investigate the difference in results between two groups and view Assessment results across three different subjects at once. Use the Formative Statement analysis to examine pupil performance against curriculum statements and help catch students who are falling behind. It's easy to identify where specific aspects of the curriculum need to be re-visited.



Student Performance

See how a group of students, and the sub-groups within it, are performing against their Age Related Expectations



Multi-View

View the data across multiple Assessment points and subjects at the same time



Attainment

A complete view of a group's Summative Attainment

Marksheet Tools

Marksheets have a set of tools to make data input as quick and simple as possible. Flood fill a whole row or column with the same grade, and then edit the exceptions for quick data entry. Download or export your data to share with individuals in meetings and in class. Record Evidence by uploading attachments against a statement and colour-code grades to make identification easier. Flip Axes to switch the student names from the left to along the top, entering marks in whichever way is more comfortable for you.

Analysis

Analyse student progress from one assessment point to another, investigate the difference in results between two groups and view Assessment results across three different subjects at once. Use the Formative Statement analysis to examine pupil performance against curriculum statements and help catch students who are falling behind. It's easy to identify where specific aspects of the curriculum need to be re-visited.

Detailed Specifications

| Feature | What it does | Benefits |
|---|--|--|
| Secure, cloud-based logging and analysis of primary assessment | As part of the cloud-based MIS package, allows users to securely manage Primary Assessment over the internet | <ul style="list-style-type: none"> • 24/7 access to information from any web-connected device • All users with the relevant permissions have immediate access to Assessment information • Automatically backed-up storage of Assessment • Guaranteed ISO 27001 compliance for top security |
| Assessment data integrated with MIS data | Allows schools to record student assessment directly within the MIS without the need for third-party solutions | <ul style="list-style-type: none"> • All primary assessment information is held securely in one place • Lower training needs as users familiar with interface • Lower TOC as no third-party package fees • No need to rely on exporting data from the MIS into other tools |
| Summative assessment marksheet | Schools can input their summative assessment results | <ul style="list-style-type: none"> • Quickly input summative assessment results, and view them in a marksheet alongside MIS data |
| Formative assessment marksheet and analysis | Input pupil's progress against the DfE's curriculum | <ul style="list-style-type: none"> • Input formative assessment, using the DfE's formative statements • Record evidence of work • Choose to use your own statements, or the DfE's statements • Option to create your own termly Programme of Study • View and mark summative results, allowing you to base your summative judgements on formative results |

| | | |
|---|--|--|
| <p>Early Years marksheets and analysis</p> | <p>Assess students throughout their early years</p> | <ul style="list-style-type: none"> • Input student progress and record evidence of work • Help ensure students attain GLD status |
| <p>Tests scores and analysis</p> | <p>Input test results</p> | <ul style="list-style-type: none"> • Scores can be converted to standardised scores, and graded based on score thresholds |
| <p>Marksheet tools</p> | <p>Marksheets have a set of tools to make data input as quick and simple as possible</p> | <ul style="list-style-type: none"> • Flood fill – fill in a whole row or column with the same grade, and then edit the exceptions • Download/Export – export your data to do further analysis or reporting • Bring Forward – copy results from a previous term, so only changes need to be inputted • Record Evidence – upload evidence of progress against a statement • Flip Axes - invert the default setting of the marksheet (student list on the left, statements/subjects along the top), to enter marks in whichever way is more comfortable for you • Record Evidence – upload evidence of progress against a statement • Colour-code – show or hide the colour codes for grades • Add/Remove columns – add data from the MIS dataset, such as whether students are SEN or PPI • Mark input direction – for test scores, define where the cursor goes when you tab between cells |

| | | |
|---|--|--|
| <p>Diminish the Difference analysis tool</p> | <p>See the difference in results between two groups</p> | <ul style="list-style-type: none"> • Analyse the gaps between different groups of pupils. See if Pupil Premium students are falling behind non-Pupil Premium students, or whether EAL students are struggling to keep up • A dashboard view that shows any gaps between student groups, allowing you to identify where your resources are best used |
| <p>Prior Attainment Map analysis tool</p> | <p>Analyse students' progress from one assessment point to another</p> | <ul style="list-style-type: none"> • View how pupils are progressing from one assessment point to the next • See who is improving, falling behind, or progressing along your expected path. • Provides a colour-coded grid showing pupil's assessment data compared between two assessment points • Ideal for class teachers to immediately see how their class is progressing |
| <p>Diminish the Difference analysis tool</p> | <p>See the difference in results between two groups</p> | <ul style="list-style-type: none"> • Analyse the gaps between different groups of pupils. See if Pupil Premium students are falling behind non-Pupil Premium students, or whether EAL students are struggling to keep up • A dashboard view that shows any gaps between student groups, allowing you to identify where your resources are best used |
| <p>Subject Triangulation analysis tool</p> | <p>View assessment results across up to three different subjects</p> | <ul style="list-style-type: none"> • A Venn diagram report that shows how pupils are progressing in multiple subjects • View strengths and weaknesses for whole groups at a glance • Provide SLTs and teachers with a great visual way of viewing a group's assessment results across multiple subjects at once |

| | | |
|---|---|---|
| <p>Depth of Knowledge analysis tool</p> | <p>See how pupils are performing against curriculum statements</p> | <ul style="list-style-type: none"> • Track pupil's progress against formative assessment statements • Helps catch pupils who are falling behind early, or where specific aspects of the curriculum need to be re-visited |
| <p>Attainment Overview analysis tool</p> | <p>See how groups of students are performing against their AREs, across a range of subjects and assessment points</p> | <ul style="list-style-type: none"> • The Attainment Overview will show you how a group of students, and the sub-groups within it, are performing against their Age Related Expectations • View the data across multiple assessment points and subjects at the same time • A complete view of a group's summative attainment |
| <p>Combined Report</p> | <p>Combine multiple assessment types and statutory results on one report</p> | <ul style="list-style-type: none"> • The Combined Report will allow you to look at different assessment results in the Primary Tracker on one screen • Statutory results can also be added from the standard Assessment marksheets, giving a complete view of pupils' assessment over time |
| <p>Easy/ configurable setup</p> | <p>Use setup wizards to configure Primary Assessment to the needs of the individual school</p> | <ul style="list-style-type: none"> • Customise the gradesets to the school's individual approach • Colour-code grades so results can be easily understood at a glance • Apply your own age-related expectations to year groups • Choose which groups are assigned which assessment types • Only use the assessment types that your school wants to use |



Book a demo now!



020 8290 7171



enquiries@bromcom.com